

We're Off to a Wonderful Start!

The school year is off to a great start as our staff welcomed back approximately 1,900 students on August 22. We began the school year early in order to end on the Friday prior to Memorial Day. The earlier start will provide additional time next summer to complete the major renovations occurring at Community Elementary School (CES) and the High School. CES will receive a complete renovation of the entire school along with a new addition and gym. After completion of this project CES will become a Primary School (grades K-2) and an Intermediate School (grades 3-5) sharing a cafeteria and library. The high school renovation includes updated science and mathematics classrooms and a larger commons/cafeteria area for students. There will also be an addition constructed at the high school which will include updated band/choir classrooms, new administrative offices and new counselling offices.

The referendum projects have led to several changes for the 2019/20 school year. Due to the closure of the 1990 portion of CES, six of our eight kindergarten classrooms have been relocated to the high school, fifth grade has been relocated to the middle school, the elementary library has moved to the CES small gym, and several teachers moved classrooms within their buildings at CES and the high school. The students and staff have adjusted to the temporary changes extremely well.

This past summer a new parking lot was completed and demolition of the 1990 portion of CES has begun. In addition, excavation work was completed for the CES addition and construction of the new CES gym has started. Final designs for both schools have been completed and soon Request for Proposals (RFP) will be sent to subcontractors for bids.

During the upcoming months construction of the CES addition will begin and preparation for the high school addition will occur. Footings and flatwork for CES will be completed this fall and structural steel for both additions will arrive late next month or early November.

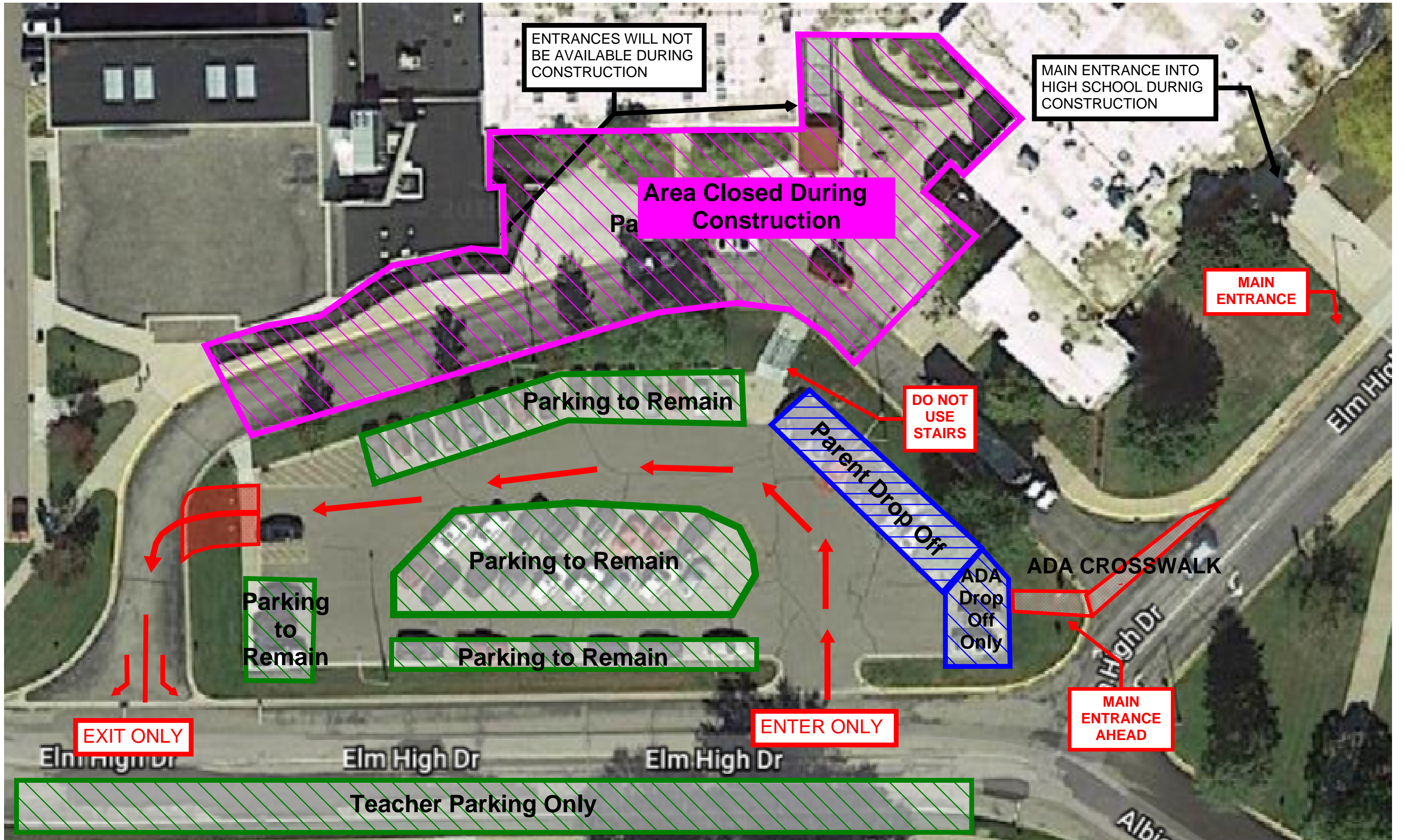
In October, the high school front entrance and the performing arts center entrance will be closed in preparation for construction in these areas. Access to the main office will be from Door E and access to the performing arts center will occur from the high school north doors which face the football field (Door O). The upper high school parking lot will be modified to include ADA accessibility into Door E and dedicated parent drop off/pick up parking will be available. The upper lot will also become one way with a single entrance and exit area. A map can be found on the District website and is included below.

Along with the referendum projects, the fall is always busy in the District. A few key dates that residents may be interested in are:

October	Installation of pedestrian footbridge (date TBD)
October 4	Homecoming
October 21	High School Choir Concert in the EPAC

October 24	Yahara Valley Elementary School Fall Fest (5:00-9:00)
November 8-10	High School Musical
December 7	Snowflake Craft Fair

It is a privilege to serve as the District Administrator for the Edgerton School District.
Dr. Pauli



ENTRANCES WILL NOT BE AVAILABLE DURING CONSTRUCTION

MAIN ENTRANCE INTO HIGH SCHOOL DURNIG CONSTRUCTION

Area Closed During Construction

MAIN ENTRANCE

Parking to Remain

DO NOT USE STAIRS

Parent Drop Off

Parking to Remain

ADA Drop Off Only

ADA CROSSWALK

Parking to Remain

Parking to Remain

MAIN ENTRANCE AHEAD

EXIT ONLY

ENTER ONLY

Elm High Dr

Elm High Dr

Elm High Dr

Teacher Parking Only

Alb...