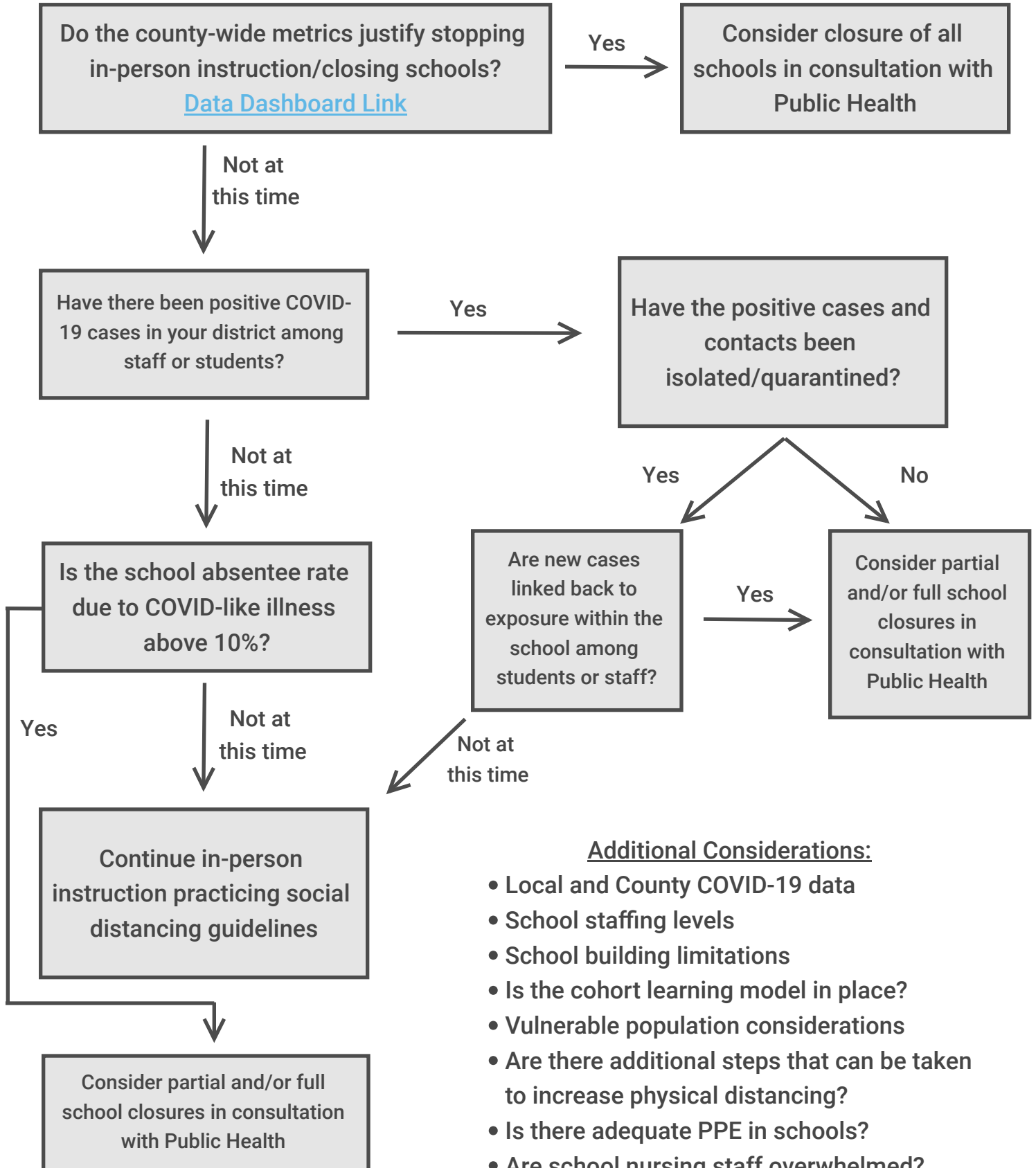


# Rock County In-Person/Virtual Decision Guide for Schools

Updated 8/18/20



### Additional Considerations:

- Local and County COVID-19 data
- School staffing levels
- School building limitations
- Is the cohort learning model in place?
- Vulnerable population considerations
- Are there additional steps that can be taken to increase physical distancing?
- Is there adequate PPE in schools?
- Are school nursing staff overwhelmed?