



Dear Parents/Guardians:

Currently the school board has determined that we will be starting the school year in [Tier 3](#). Please understand this could indeed change at any time depending on the trend data from our local health department.

Scheduling:

We have decided to block the High School schedule as a balancing act of mitigating COVID-19 and addressing the academic and the social & emotional needs of our high school students. A block schedule was developed to minimize student transitions throughout the day. We will also run odd/even hours to assist departments with blocked courses. With this scenario, we will avoid a student being in the same blocked class for 3 hours/half of a school day.

In-person students:

“A” Students - Last name A-K

“B” Students - Last name L-Z

Edgerton Virtual students:

Regardless of last name, all full-time Edgerton Virtual students will be considered “A” day students, to provide them with a consistent routine and structure with their teacher.

Mondays - “A” students attend in person, “B” students follow schedule virtually from home.*

Tuesday - “B” students attend in person, “A” students follow schedule virtually from home.*

Wednesday - Eight period day ALL students virtual (see Wednesday schedule below)

Thursday - “A” students attend in person, “B” students follow schedule virtually from home.*

Friday - “B” students attend in person, “A” students follow schedule virtually from home.*

*Note: A student who is attending school remotely/virtually (opposite their assigned in-person day) should be logging in to each Google Classroom during each period in their schedule. There may be days where a teacher is not going to provide live instruction, but will provide independent work for the day. Students should not schedule work, unless integrated into their school schedule, during the school day. Students are expected to attend classes during their scheduled hour whether in person or virtual.

"A" Monday Schedule - Hours 1, 3, 5, 7
 "B" Tuesday Schedule - Hours 2, 4, 6, 8
 Wednesday - see below
 "A" Thursday Schedule - Hours 2, 4, 6, 8
 "B" Friday Schedule - Hours 1, 3, 5, 7

M/F	T/Th	Bell schedule
1st hour/2nd hour		7:50 - 9:30
3rd hour/4th hour		9:34 - 11:09
1st Lunch		11:09 - 11:39
5th hour/6th hour		11:39 - 1:18
5th hour/6th hour		11:13 - 12:01
2nd Lunch		12:01 - 12:31
5th hour/6th hour		12:31 - 1:18
7th hour/8th		1:22 - 3:05

Wednesday	
1st hour	7:50 - 8:39
2nd hour	8:43 - 9:27
3rd hour	9:35 - 10:19
4th hour	10:23 - 11:07
lunch	11:07 - 11:38
5th hour	11:38 - 12:22
6th hour	12:26 - 1:10
7th hour	1:14 - 1:58
8th hour	2:02 - 2:46
Homebase	2:50 - 3:05

Lunch: A student's lunch assignment is determined by their 5th & 6th hour classes and will be reflected on student schedules.

Daily Routines

Arrival:

- Students may enter through 3 doors -200, 210, 220 (see attached map)
- Students may enter starting at 7:15 am; mask & social distancing is required upon entry
- Each student and staff will undergo a temperature & symptom screening prior to entry
- 7:15 am - 7:45 am: students social distance in commons with supervision
- 7:45 am - 7:50 am: students report to 1st hour

During the Day:

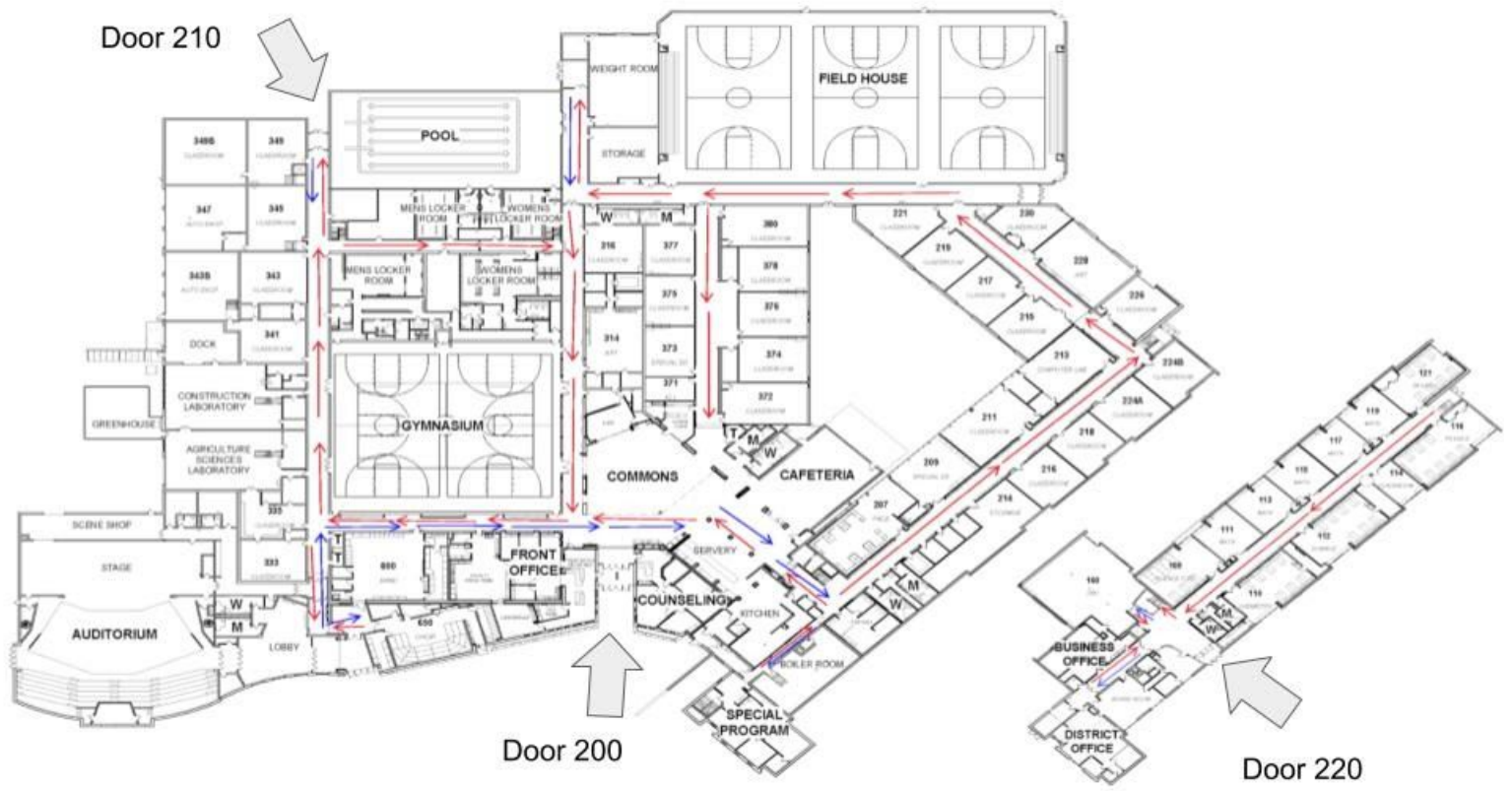
- Blocked schedule to reduce transitions:
 - No Homebase, except for Wednesday virtually
 - No 8 minute break except for Wednesday virtually
- Use of backpacks encouraged - student access to lockers is limited to before/after school and lunch
- One way hallways/traffic patterns where possible during the school day (see attached map)
- Hand sanitizer used in each room upon entering
- High touch areas & equipment (i.e. saws in tech ed) cleaned at end of each class (less than half the class will be in-person)
- 2 lunch periods - larger space available in lunch room & new commons area, fewer students in building each day
- Open campus for grades 10-12: lunch, study halls, senior opens

Dismissal:

- Bus riders and parent pickup students dismissed at 3:00
- Drivers and walkers dismissed at 3:05
- Commons & hallway supervision will be provided as students leave the building

Other Details:

- For open study hall (grades 10-12), students have the option of reporting to study hall or leaving campus for that block
- Freshmen will need to remain on campus for lunch and study halls
- No zero or ninth hour to start the year
- District policy: No visitors in the building at this time. Virtual parent meetings.
- Students/staff will be rescreened in the main office upon re-entry to school building after lunch/study hall/opens
- Cell phone policy will be followed; students can keep their phones in their locker for the day or in their backpack, turned off and out of sight



Red arrows are one way traffic only.

Blue arrows along with red arrows denote where we have two-way traffic.